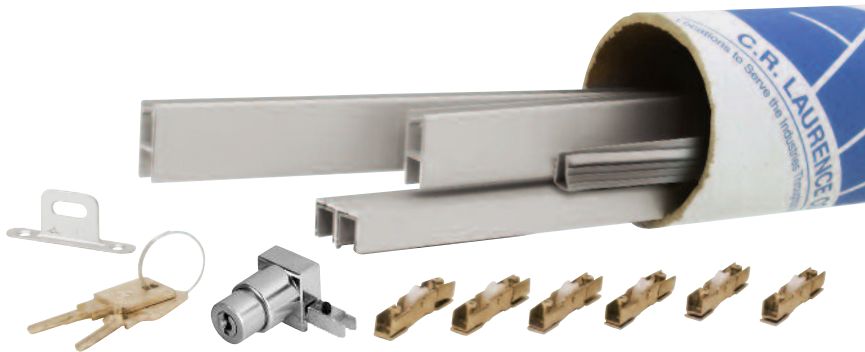


CRL Continental Style Pre-Cut Security Track Assemblies

- Designed for 3/16" and 1/4" (5 and 6 mm) Glass
- Pre-Cut Assemblies in Three Lengths
- Satin Anodized Finish



Continental Security Showcase Track Assembly shown with Anti-Lift Clip installed



CRL's Continental Style Security Track System is now available in pre-cut, ready to install assemblies that contain all the parts you will need to complete your showcase project. The Continental Track Assembly has a uniquely designed Anti-Lift Clip that prevents removal of the showcase doors when they are in the locked position. This Track Assembly is well designed, efficient, and attractive. These 36", 48", and 72" (914, 1219, and 1829 mm) satin anodized assemblies not only save fabrication labor, but also are more economical due to minimized material waste. CRL End Caps for H-Bar, Cat. No. DV148CH, can be ordered separately (see page 483G).

NOTE: Maximum suggested panel size is 36" W x 48" H (914 x 1219 mm).

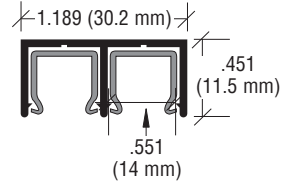
CAT. NO.	FINISH	LENGTH
CTA36A	Satin Anodized	36" (914 mm)
CTA48A	Satin Anodized	48" (1219 mm)
CTA72A	Satin Anodized	72" (1829 mm)

General Glass Cutting Guidelines
 Glass Height = Opening Height
 Minus 1-1/8" (28.6 mm)

Minimum order: 1 each. Sizes can be combined for quantity pricing.

COMPONENTS INCLUDED WITH CONTINENTAL PRE-CUT SECURITY TRACK ASSEMBLY:

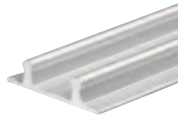
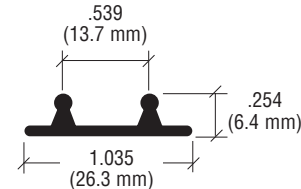
UPPER DOUBLE CHANNEL



CAT. NO. D609A

Qty. per assembly: 1

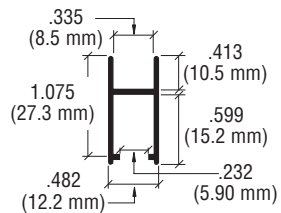
LOWER RAIL



CAT. NO. D602A

Qty. per assembly: 1

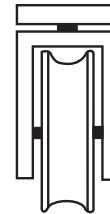
H-BAR



CAT. NO. DV146A

Qty. per assembly: 2

WHEEL ASSEMBLY



CAT. NO. DV147

ANTI-LIFT CLIP



CAT. NO. 6306

Qty. per assembly: 1

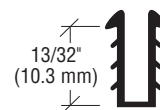
END CAP LOCK



CAT. NO. 0681SC

Qty. per assembly: 1

GLAZING VINYL



CAT. NO. DV144C

CRL Continental Style Security Rolling Track Assemblies

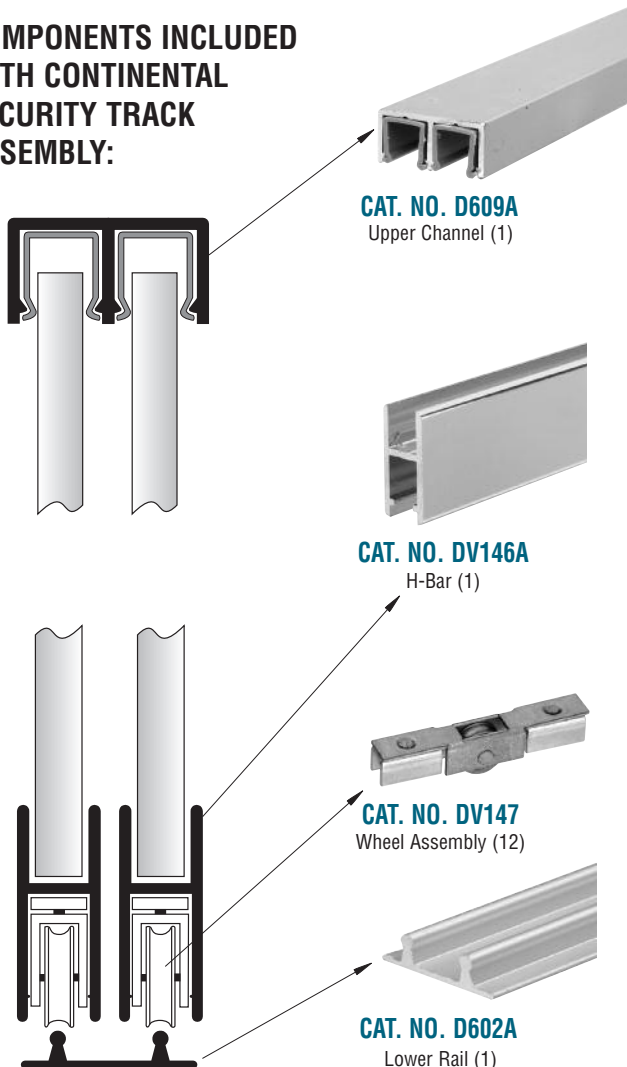
- Perfect When Security is Required for Showcases
- Ready for You to Cut to Size
- Fast, Easy Installation
- 12 Ft (3.66 m) Length

C.R. Laurence introduces the Continental Series Security Rolling Track Assembly. It uses a unique Anti-Lift Clip and Locking End Cap for an added security feature to prevent doors from being lifted upward and out of the track. The twelve Cat. No. DV147 Nylon Wheels that come with the assembly install quickly in the special extruded aluminum H-Bar with just a small flat tipped screwdriver.

Your customers will enjoy years of quiet, smooth operation from their Continental Style Security Rolling Track Assembly.



COMPONENTS INCLUDED WITH CONTINENTAL SECURITY TRACK ASSEMBLY:



Continental Security Track Assembly shown with Cat. No. 0681 Series Lock and Cat. No. 6306 Anti-Lift Clip (sold separately.)

CRL's Continental Series Security Rolling Track Assembly components are conveniently boxed for ease of handling and include 12' (3.66 m) lengths of Upper Channel, Lower Rail, H-Bar, and Wheel Assemblies. The extrusions for this popular Track Assembly can be cut to the size of your custom showcase or cabinet. Cat. No. 0681 Series End Cap Locks and Cat. No. 6306 Anti-Lift Clips (see page 470G), are sold separately, and are necessary components to make this track assembly secure. CRL DV144C or DV144M Glazing Vinyl (see page 482G) provides a professional finished appearance, and must be ordered separately. **NOTE:** Maximum suggested panel size is 36" W x 48" H (914 x 1219 mm).

CAT. NO.	FINISH	STOCK LENGTH
CTA00A	Satin Anodized	12' (3.66 m)
CTA00BA	Brite Anodized	12' (3.66 m)
CTA00BGA	Brite Gold Anodized	12' (3.66 m)

Minimum order: 1 each. General Glass Cutting Guidelines: Glass Height = Opening Height Minus 1-1/8" (28.6 mm). All Track Assemblies can be combined for quantity pricing. Stock lengths longer than 98" (2.49 m) cannot ship UPS. They must ship common carrier, or can be picked up at Will Call in all CRL locations.